

Cat#: RCHEOT002, 003 Lot: 20130514

For Research Use Only

► Properties and biological tests

Mycoplasma ⁽¹⁾	Negative
Endotoxin	<0.1 EU/mL

⁽¹⁾Tested by PCR for the detection of mycoplasma.

► Culture test performed using human iPS cells

Methods

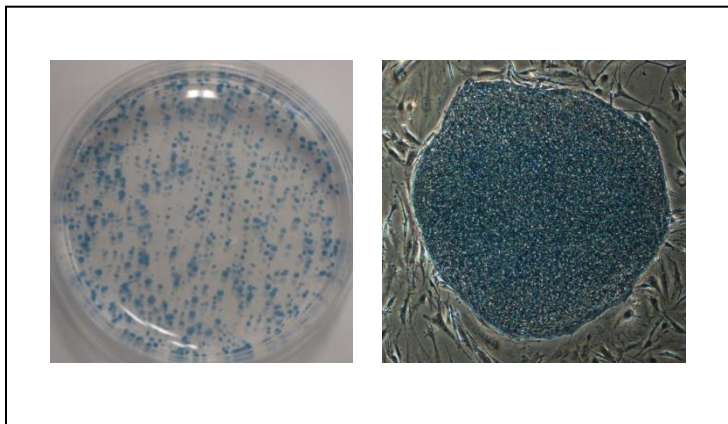
Human iPS cells (201B7; Takahashi, K. et al., *Cell*, 131, 861-72, 2007) were cultured in the Primate ES cell medium with MEF feeder cells for 4 days.

After 3 passages, the cell morphology were observed.

Alkaline phosphatase activity was ascertained using the ALP substrate kit III (vector).

Results

Alkaline phosphatase activity: Qualified



ReproCELL Inc.

<http://www.reprocell.com>

E-mail:

➤ Japanese(日本語): info_jp@reprocell.com

➤ English(英語): info_en@reprocell.com