

Data sheet: Primate ES Cell Medium

Cat#: RCHEMD001, Lot: R1M140829

For Research Use Only

MFG date 29, Aug, 2014

Expiry date Aug, 2017 *Guaranteed when stored at -20 deg.C. (Date by use)

► Properties and biological tests

Appearance	Transparent orange liquid
Aseptic test ⁽¹⁾	Negative (day 14)
Mycoplasma ⁽²⁾	Negative
pH ⁽³⁾	7.31
Endotoxin	0.010EU/mL
Osmotic pressure ⁽⁴⁾	327 mOsm/kg

(1) Cultured using thioglycolic acid medium for aseptic test and SCD medium

(2) Tested by PCR for the detection of mycoplasma.

(3) Measured after 12 h incubation under conditions of 37°C and 5% CO₂

(4) Measured using the freezing point depression method

► Culture test performed using human iPS cells

Methods

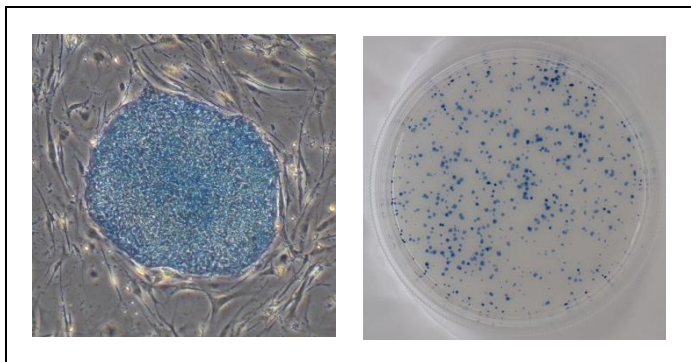
Human iPS cells (201B7; Takahashi, K. et al., *Cell*, 131, 861-72, 2007) were cultured in the Primate ES cell medium with MEF feeder cells for 4 days.

After 3 passages, the cell morphology were observed.

Alkaline phosphatase activity was ascertained using the ALP substrate kit III (vector).

Results

Alkaline phosphatase activity: Qualified



ReproCELL Inc.

<https://www.reprocell.com>

E-mail:

➤ Japanese (日本語): info_jp@reprocell.com

➤ English (英語): info_en@reprocell.com