

Data sheet: Laminin-5

Cat#: RCHEOT004, Lot: 20130822

For Research Use Only

MFG date 22, Aug , 2013

Expiry date Nov, 2014 *Guaranteed when stored at -80 deg.C. (Date by use)

► Properties

Appearance	Transparent liquid
Concentration	22 µg/mL
Purity (SDS-PAGE)	>95%

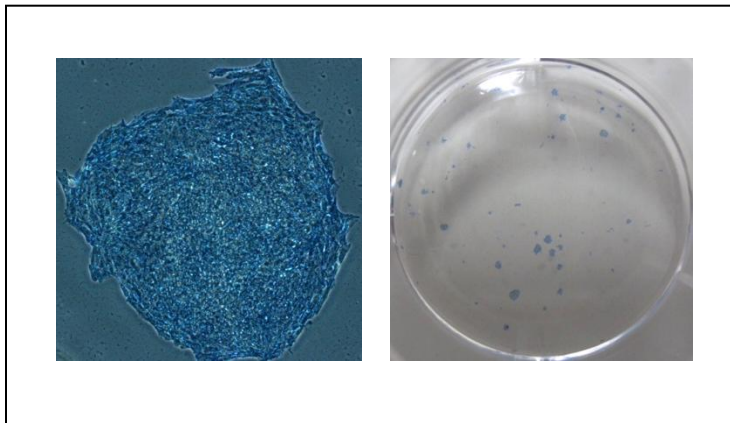
► Culture test performed using human iPS cells

Methods

Human iPS cells (201B7; Takahashi, K. et al., *Cell*, 131, 861-72, 2007) were cultured in the ReproFF2 on Laminin-5-coated dish for more than 7 days. Subsequently, the cell morphology was observed and compared with those of the control. Alkaline phosphatase activity was ascertained using the ALP substrate kit III (vector).

Results

Alkaline phosphatase activity: Qualified



ReproCELL Inc.

<http://www.reprocell.com>

E-mail:

➤ Japanese(日本語): info_jp@reprocell.com

➤ English(英語): info_en@reprocell.com