

Laminin-5 (Recombinant Human Laminin-332)

Cat#: RCHEOT004, Lot: A01NY29

For Research Use Only

► Properties

Appearance	Transparent liquid
Concentration	30 µg/mL
Purity (SDS-PAGE)	>95%

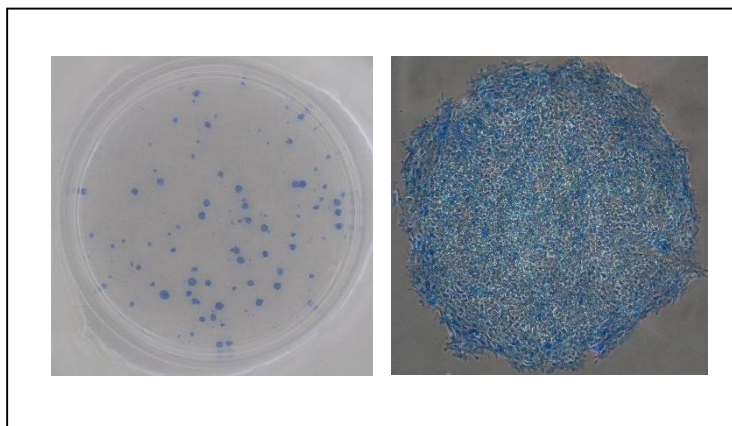
► Culture test performed using human iPS cells

Methods

Human iPS cells (201B7; Takahashi, K. et al., *Cell*, 131, 861-72, 2007) were cultured in the ReproFF2 on Laminin-5-coated dish for more than 7 days. Subsequently, the cell morphology was observed and compared with those of the control. Alkaline phosphatase activity was ascertained using the ALP substrate kit III (vector).

Results

Alkaline phosphatase activity: Qualified



ReproCELL Inc.

<http://www.reprocell.com>

E-mail: info_repro@reprocell.com