

Data sheet: Feeder cells (MEF)

Cat#: RCHEFC003, Lot: 20141106

For Research Use Only

MFG date 06, Nov, 2014

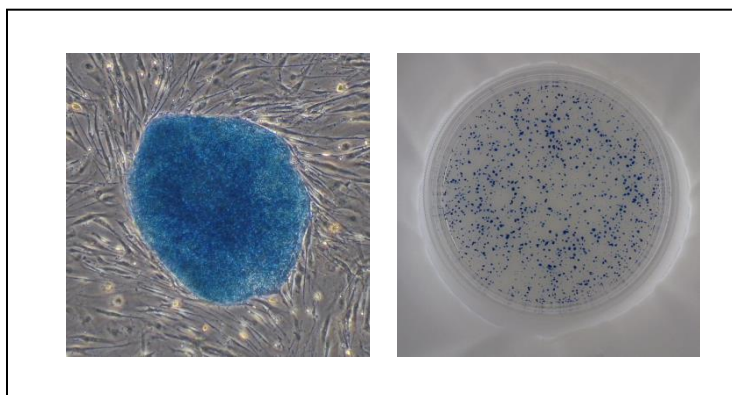
► Culture test performed using human iPS cells

Methods

Human iPS cells (201B7; Takahashi, K. et al., *Cell*, 131, 861-72, 2007) were cultured in the Primate ES cell medium with MEF feeder cells for more than 9 days (3 passages). Subsequently, the cell morphology was observed and compared with those of the control. Alkaline phosphatase activity was ascertained using the ALP substrate kit III (Vector).

Results

Alkaline phosphatase activity: Qualified



ReproCELL Inc.

<https://www.reprocell.com>

E-mail:

- Japanese(日本語): info_jp@reprocell.com
- English(英語): info_en@reprocell.com