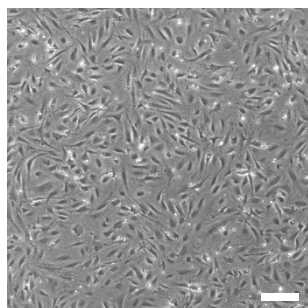


Cat#: RCHEFC003 Lot: 20150709**MFG date****30 Jul 2015*****Store in liquid nitrogen****■ Properties and biological tests****Mycoplasma ⁽¹⁾****Negative**⁽¹⁾Tested by PCR for the detection of mycoplasma.**■ Adhesion Test****Methods**

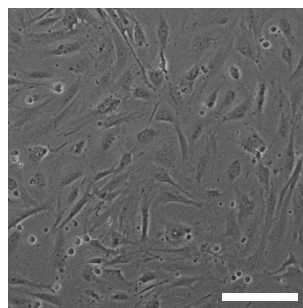
MEF feeder cells were cultured in DMEM with 10% FBS for 1 day.
Subsequently, the cell morphology was observed and compared with those of the control.

Results

Adhesiveness: Qualified



Scale: 250 μm



Scale: 100 μm