

**Cat#: RCHEFC001 Lot: 20150226****MFG date****26 Feb 2016**

\*Store in liquid nitrogen

**■ Properties and biological tests****Mycoplasma <sup>(1)</sup>**

Negative

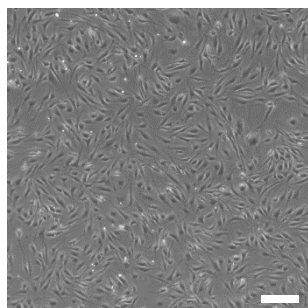
<sup>(1)</sup>Tested by PCR for the detection of mycoplasma.**■ Adhesion Test****Methods**

MEF feeder cells were cultured in DMEM with 10% FBS for 1 day.

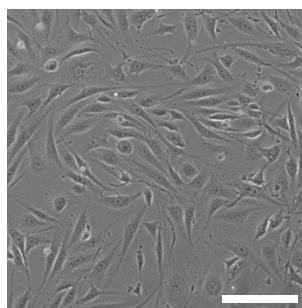
Subsequently, the cell morphology was observed and compared with those of the control.

**Results**

Adhesiveness: Qualified



Scale: 250 μm



Scale: 100 μm