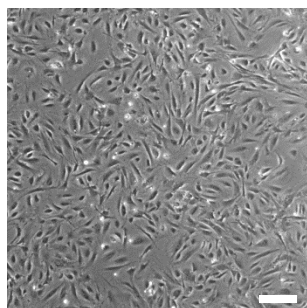


**Cat#: RCHEFC003 Lot: 20160728****MFG date****28 Jul 2016****\*Store in liquid nitrogen****■ Properties and biological tests****Mycoplasma <sup>(1)</sup>****Negative**<sup>(1)</sup>Tested by PCR for the detection of mycoplasma.**■ Adhesion Test****Methods**

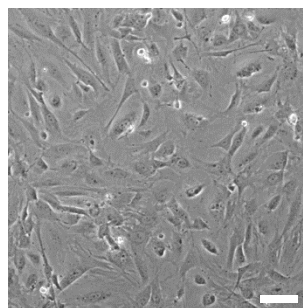
MEF feeder cells were cultured in DMEM with 10% FBS for 1 day.  
Subsequently, the cell morphology was observed.

**Results**

Adhesiveness: Qualified



Scale: 250 μm



Scale: 100 μm