

Cat#: RCHEOT002, 003 Lot: 20120509

For Research Use Only

► Properties and biological tests

Mycoplasma ⁽¹⁾	Negative
Endotoxin	<0.1 EU/mL

⁽¹⁾Tested by PCR for the detection of mycoplasma.

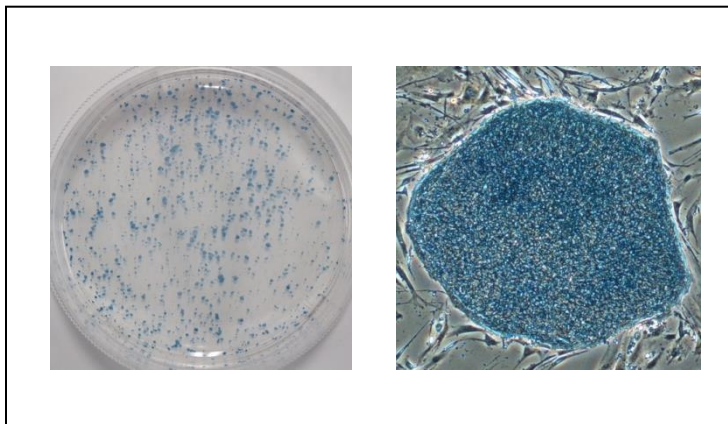
► Culture test performed using human iPS cells

Methods

Human iPS cells (201B7; Takahashi, K. et al., *Cell*, 131, 861-72, 2007) were cultured in the Primate ES Cell Medium containing 5ng/mL of bFGF for more than 7 days. Subsequently, the cell morphology was observed and compared with those of the control. Alkaline phosphatase activity was ascertained using the ALP substrate kit III (vector).

Results

Alkaline phosphatase activity: Qualified



ReproCELL Inc.

<http://www.reprocell.com>

E-mail: info_repro@reprocell.com