

# Data sheet: bFGF

Cat#: RCHEOT002, 003 Lot: 20131112

For Research Use Only

**MFG date** 12, Nov, 2013

**Expiry date** Nov, 2016 \*Guaranteed when stored at -80 deg.C. (Date by use)

**Source** Escherichia coli

## ► Properties and biological tests

|                           |            |
|---------------------------|------------|
| Mycoplasma <sup>(1)</sup> | Negative   |
| Endotoxin                 | <0.1 EU/mL |

<sup>(1)</sup>Tested by PCR for the detection of mycoplasma.

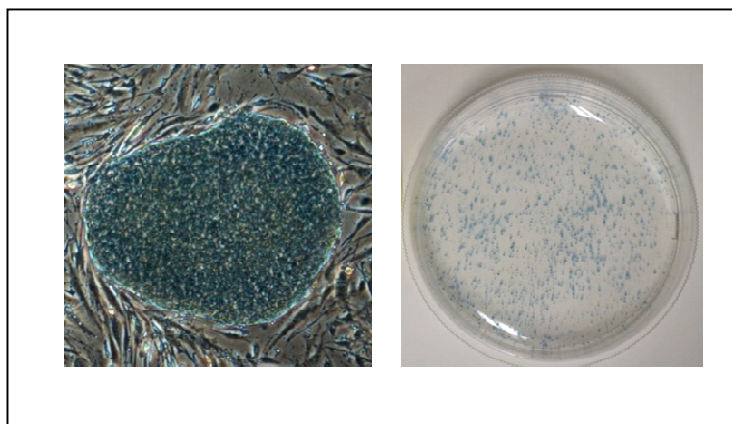
## ► Culture test performed using human iPS cells

### Methods

Human iPS cells (201B7; Takahashi, K. et al., *Cell*, 131, 861-72, 2007) were cultured in the Primate ES Cell Medium containing 5 ng/mL of bFGF for more than 7 days. Subsequently, the cell morphology was observed and compared with those of the control. Alkaline phosphatase activity was ascertained using the ALP substrate kit III (vector).

### Results

Alkaline phosphatase activity: Qualified



### **ReproCELL Inc.**

<http://www.reprocell.com>

E-mail:

➤ Japanese (日本語): [info\\_jp@reprocell.com](mailto:info_jp@reprocell.com)

➤ English (英語): [info\\_en@reprocell.com](mailto:info_en@reprocell.com)