

Cat#: RCHEOT002, 003 Lot: 20140228

For Research Use Only

MFG date 28, Feb , 2014

Expiry date Feb, 2017 \*Guaranteed when stored at -80 deg.C. (Date by use)

Source Escherichia coli

## ► Properties and biological tests

Mycoplasma <sup>(1)</sup>	Negative
Endotoxin	<0.1 EU/mL

<sup>(1)</sup>Tested by PCR for the detection of mycoplasma.

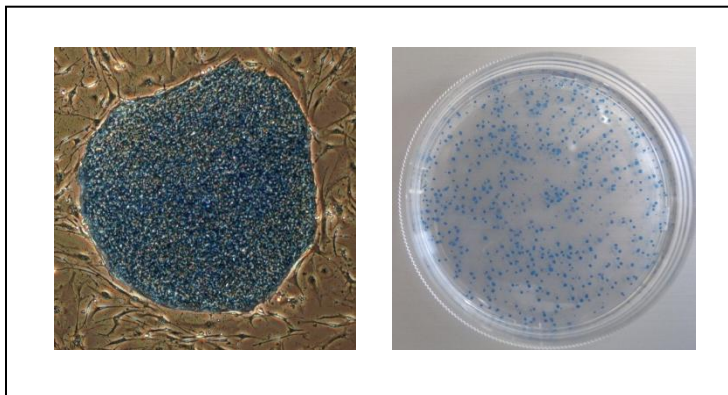
## ► Culture test performed using human iPS cells

### Methods

Human iPS cells (201B7; Takahashi, K. et al., *Cell*, 131, 861-72, 2007) were cultured in the Primate ES Cell Medium containing 5 ng/mL of bFGF for more than 7 days. Subsequently, the cell morphology was observed and compared with those of the control. Alkaline phosphatase activity was ascertained using the ALP substrate kit III (vector).

### Results

Alkaline phosphatase activity: Qualified



### **ReproCELL Inc.**

<http://www.reprocell.com>

E-mail:

➤ Japanese(日本語): [info\\_jp@reprocell.com](mailto:info_jp@reprocell.com)

➤ English(英語): [info\\_en@reprocell.com](mailto:info_en@reprocell.com)