

Cat#: RCHEOT002, 003 Lot: A01NN21

For Research Use Only

Expiry date Nov, 2017 *Guaranteed when stored at -80 deg.C. (Date by use)

Source Escherichia coli

► Properties and biological tests

Mycoplasma ⁽¹⁾	Negative
Endotoxin	<0.1 EU/mL

⁽¹⁾Tested by PCR for the detection of mycoplasma.

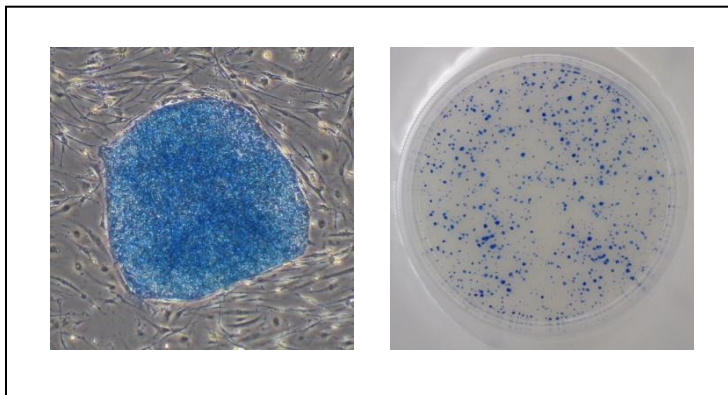
► Culture test performed using human iPS cells

Methods

Human iPS cells (201B7; Takahashi, K. et al., *Cell*, 131, 861-72, 2007) were cultured in the Primate ES Cell Medium containing 5 ng/mL of bFGF for more than 7 days. Subsequently, the cell morphology was observed and compared with those of the control. Alkaline phosphatase activity was ascertained using the ALP substrate kit III (vector).

Results

Alkaline phosphatase activity: Qualified



ReproCELL Inc.

<http://www.reprocell.com>

E-mail:

- Japanese(日本語): info_jp@reprocell.com
- English(英語): info_en@reprocell.com