

# Data sheet: Primate ES Cell Medium

Cat#: RCHEMD001, Lot: R1M150213

For Research Use Only

MFG date 13, Feb, 2015

Expiry date Feb, 2018 \*Guaranteed when stored at -20 deg.C. (Date by use)

## ► Properties and biological tests

Appearance	Transparent orange liquid
Aseptic test <sup>(1)</sup>	Negative (day 14)
Mycoplasma <sup>(2)</sup>	Negative
pH <sup>(3)</sup>	7.45
Endotoxin	0.003 EU/mL
Osmotic pressure <sup>(4)</sup>	349 mOsm/kg

(1) Cultured using thioglycolic acid medium for aseptic test and SCD medium

(2) Tested by PCR for the detection of mycoplasma.

(3) Measured after 12 h incubation under conditions of 37°C and 5% CO<sub>2</sub>

(4) Measured using the freezing point depression method

## ► Culture test performed using human iPS cells

### Methods

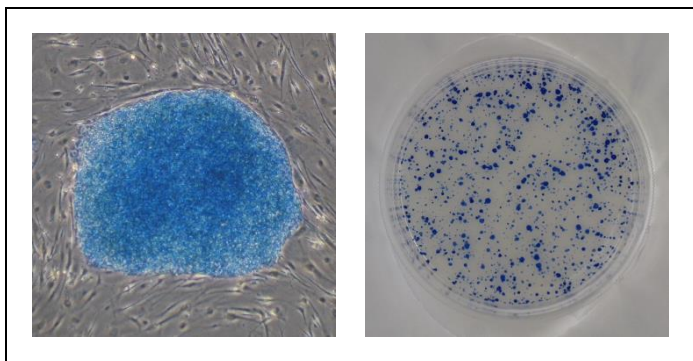
Human iPS cells (201B7; Takahashi, K. et al., *Cell*, 131, 861-72, 2007) were cultured in the Primate ES cell medium with MEF feeder cells for 4 days.

After 3 passages, the cell morphology were observed.

Alkaline phosphatase activity was ascertained using the ALP substrate kit III (vector).

### Results

Alkaline phosphatase activity: Qualified



## ReproCELL Inc.

<https://www.reprocell.com>

E-mail:

➤ Japanese (日本語): [info\\_jp@reprocell.com](mailto:info_jp@reprocell.com)

➤ English (英語): [info\\_en@reprocell.com](mailto:info_en@reprocell.com)