

## ► Compound list

Glucose	5.6 mM (Negative control)
Glucose	44.8 mM
Lithocholic acid	10 $\mu$ M
Lithocholic acid	100 $\mu$ M
Linoleic acid	10 $\mu$ M
Linoleic acid	100 $\mu$ M

## ► reagent and the assay system

Rat GLP-1 Cell kit ReproCELL Cat.No.RCPCC008

Rat GLP-1 ELISA Kit Wako Wako Pure Chemical Industries, Ltd. Cat.No. 291-59201

EnSpire software version2.0 PerkinElmer Inc.

## ►protocol

- 1, Thaw Rat GLP-1 cells.
- 2, Culture the cells for 12 h with Medium A for GLP-1 in a CO<sub>2</sub> incubator.
- 3, Collect and resuspend the cells in Medium B for GLP-1, transfer the cell suspension to an assay plate (100  $\mu$ L/well).
- 4, Incubate the cells in the plate for 20 minutes in a CO<sub>2</sub> incubator.
- 5, Add the test compound solution into the assay plate (100  $\mu$ L/well).
- 6, Incubate the cells in the plate for 40 minutes in a CO<sub>2</sub> incubator.
- 7, Collect 90  $\mu$ L supernatant for measurement.

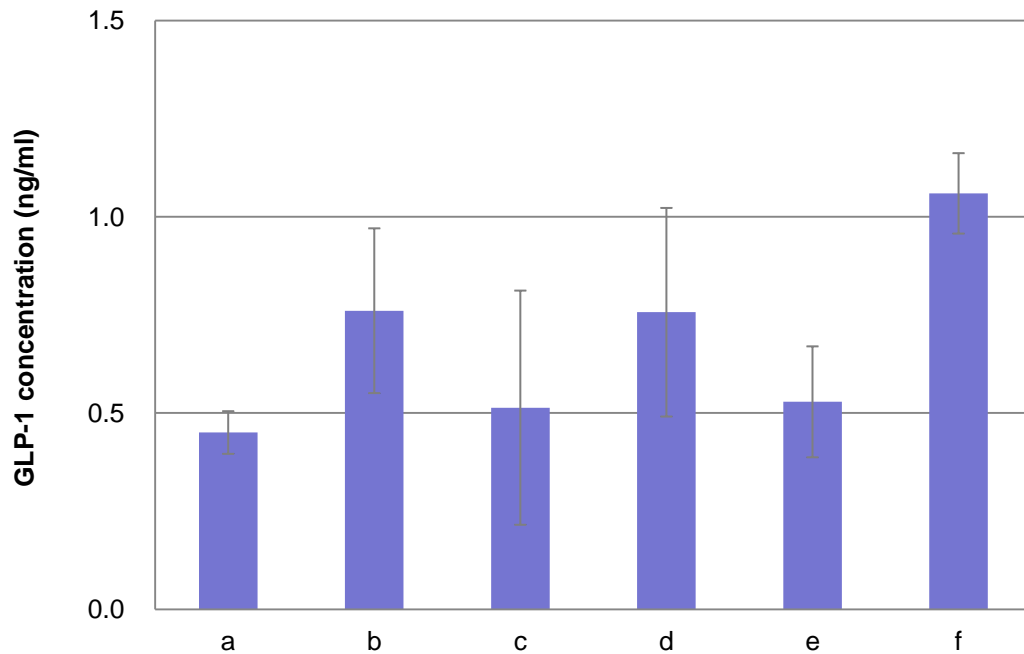
**ReproCELL Inc.**

<http://www.reprocell.com>

E-mail: [info\\_repro@reprocell.com](mailto:info_repro@reprocell.com)

## ► Results

### Total GLP-1 concentration



SD n=4

a: Glucose 5.6 mM Negative control

b: Glucose 44.8 mM

c: Lithocholic acid 10  $\mu$ M

d: Lithocholic acid 100  $\mu$ M

e: Linoleic acid 10  $\mu$ M

f: Linoleic acid 100  $\mu$ M

**ReproCELL Inc.**

<http://www.reprocell.com>

E-mail: [info\\_repro@reprocell.com](mailto:info_repro@reprocell.com)