

# Laminin-5 (Recombinant Human Laminin-332)

Cat#: RCHEOT004, Lot: 20110802

For Research Use Only

## ► Properties

Appearance	Transparent liquid
Concentration	24µg/mL
Purity (SDS-PAGE)	>95%

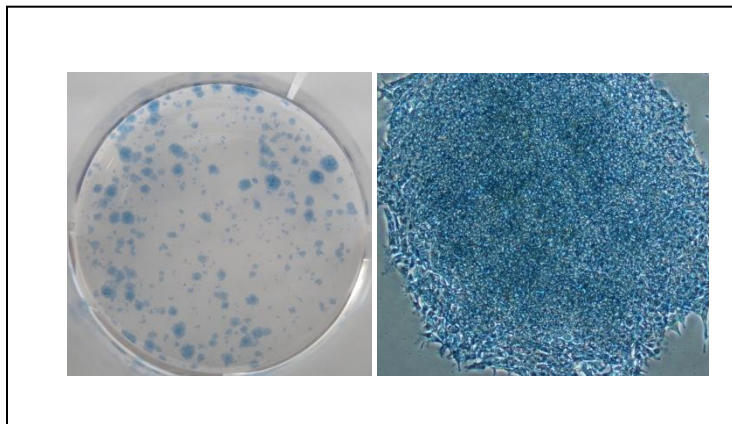
## ► Culture test performed using human iPS cells

### Methods

Human iPS cells (201B7; Takahashi, K. et al., *Cell*, 131, 861-72, 2007) were cultured in the ReproFF2 on Laminin-5-coated dish for more than 7 days. Subsequently, the cell morphology was observed and compared with those of the control. Alkaline phosphatase activity was ascertained using the ALP substrate kit III (vector).

### Results

Alkaline phosphatase activity: Qualified



**ReproCELL Inc.**

<http://www.reprocell.com>

E-mail: [info\\_repro@reprocell.com](mailto:info_repro@reprocell.com)