

Cat#: RCHEFC003 Lot: 20151008**MFG date****30 Oct 2015**

*Store in liquid nitrogen

■ Properties and biological tests**Mycoplasma ⁽¹⁾**

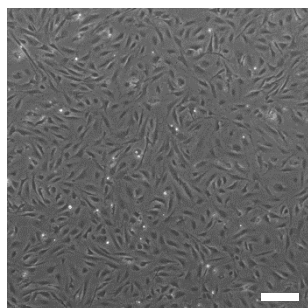
Negative

⁽¹⁾Tested by PCR for the detection of mycoplasma.**■ Adhesion Test****Methods**

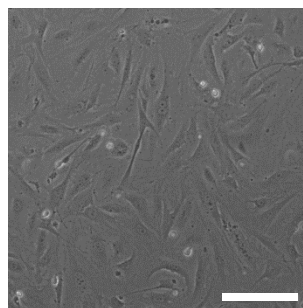
MEF feeder cells were cultured in DMEM with 10% FBS for 1 day.
Subsequently, the cell morphology was observed and compared with those of the control.

Results

Adhesiveness: Qualified



Scale: 250 μm



Scale: 100 μm