

**Cat#: RCHEFC003 Lot: 20171019****MFG date****19 Oct 2017**

\*Store in liquid nitrogen

**■ Properties and biological tests****Mycoplasma <sup>(1)</sup>**

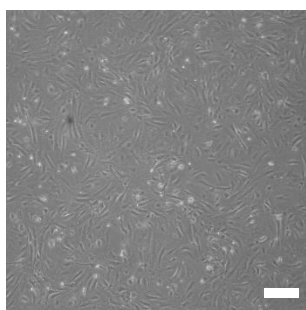
Negative

<sup>(1)</sup>Tested by PCR for the detection of mycoplasma.**■ Adhesion Test****Methods**

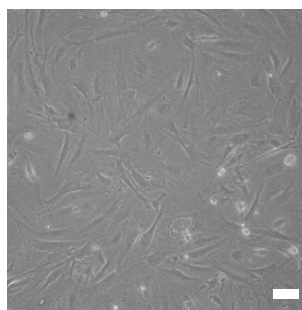
MEF feeder cells were cultured in DMEM with 10% FBS for 1 day.  
Subsequently, the cell morphology was observed.

**Results**

Adhesiveness: Qualified



Scale: 250 μm



Scale: 100 μm