

Cat#: RCHEFC001 Lot: 20180308**MFG date****08 Mar 2018**

*Store in liquid nitrogen

■ Properties and biological tests**Mycoplasma ⁽¹⁾**

Negative

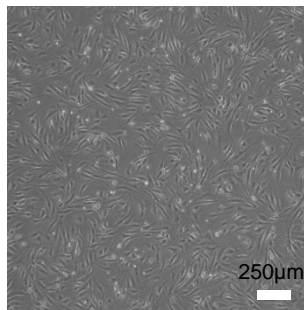
⁽¹⁾Tested by PCR for the detection of mycoplasma.**■ Adhesion Test****Methods**

SL10 feeder cells were cultured in DMEM with 10% FBS for 1 day.

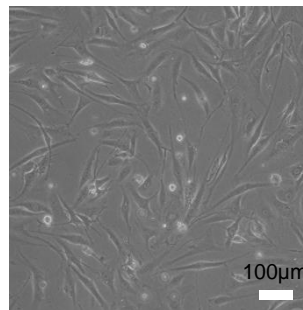
Subsequently, the cell morphology was observed and compared with those of the control.

Results

Adhesiveness: Qualified



Scale: 250 μm



Scale: 100 μm