

Cat#: RCHEFC003 Lot: 20181108**MFG date****08 Nov 2018**

*Store in liquid nitrogen

■ Properties and biological tests**Mycoplasma ⁽¹⁾**

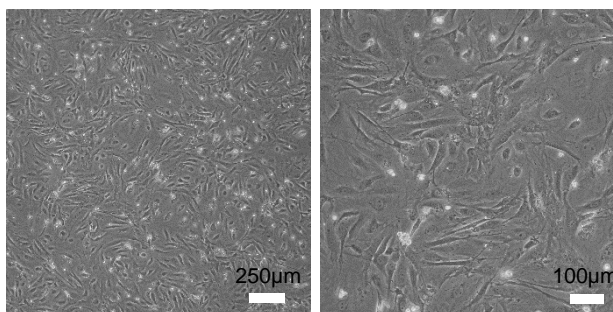
Negative

⁽¹⁾Tested by PCR for the detection of mycoplasma.**■ Adhesion Test****Methods**

MEF feeder cells were cultured in DMEM with 10% FBS for 1 day.
Subsequently, the cell morphology was observed.

Results

Adhesiveness: Qualified



Scale: 250 µm

Scale: 100 µm